

# ELECTRIC STRIKE SERIES

Standard Heavy Duty Electric Strike W/Signal

## Advantages

- Enhanced Mechanical Structure Design
- 1,000,000 times of Magnetic Valve Design.
- Fail Safe / Fail Secure adjustable
- 12/24VDC/VAC Working Voltage
- Lock Signal with NO/NC/COM contacts
- Suitable for European American Push Rod Lock

## Parameters

Dimension: 230L\*40W\*30H(mm)

Holding Force: 1000kg

Working Voltage: 12V/220mA 24V/110mA

Feature: Fail Safe / Fail Secure adjustable

Suitable for: European & American fire push bar

Surface Temperature: Within +20

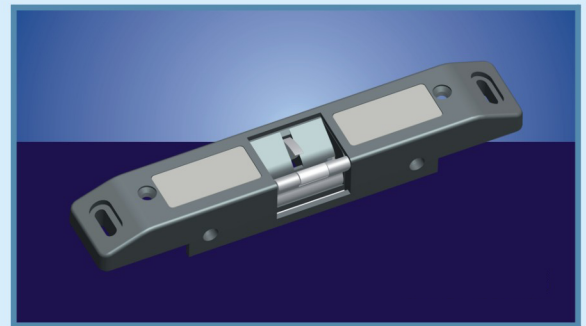
Working Humidity: 0-95% ( Relative Humidity)

Panel Treatment: High-temperature Baking Coating

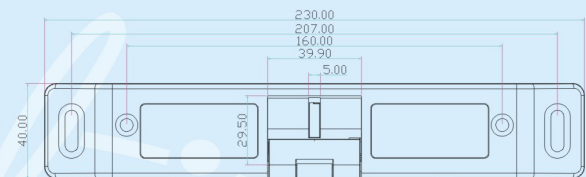
Bolt Material: Harden 304 Stainless Steel

Door Swing: 90 degrees

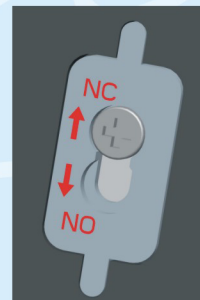
Weight: 0.75kg



## Dimension Diagram



## Adjustment



Fail-Safe



Fail-Secure

## Warranty

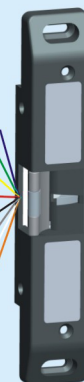
Warranty service will be honored if the damage is not caused by human. We provides 2 years warranty, for Electric strike service. But We disclaims all responsibility for damage cause by misuse.

## Statement

Our Company retains the specification of the product and the right to make the amendment. For parameters amendment of the products, we will not inform in advance. The product pictures are not allowed to used in any other way without the consent of Our Company

## Output

Blue: NO  
Green: COM  
Yellow: NC  
Red: +  
Black: -  
Gray: NC  
White: COM  
Brown: NO



## Installation

