



BS-K33 Wifi Mobile APP Set Up Instruction

Getting Started : Creating an Account

Note: BS-33 Can not work with 5G & MESH Wifi Router Network !

- Search for " eWeLink " on your device: AppStore/Google Play
Download the app to your device.



- You must create an account using a valid email account. Tap on register to begin.
- Enter an email address that will be associated with this account and tap next.
- Tap on " Send Code" You will receive an e-mail with a Verification code, enter the code and create a password. Log in when once you create an account.

The registration process consists of three steps:

- Step 1:** Select the country (e.g., USA(+1)), enter the phone number/email, and create a password. Tap the 'Register' button.
- Step 2:** Enter the email address and tap the 'Next' button.
- Step 3:** Enter the verification code (received via email), create a password, and confirm the password. Tap the 'Send code' button to receive the verification code.

- Next you must pair the device : Press * Admin Program Code # 63 #

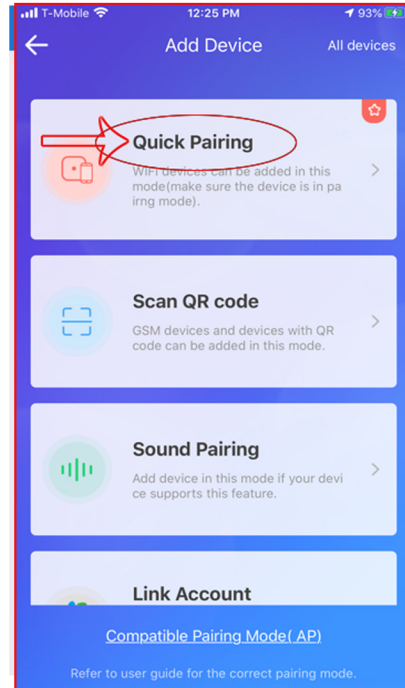
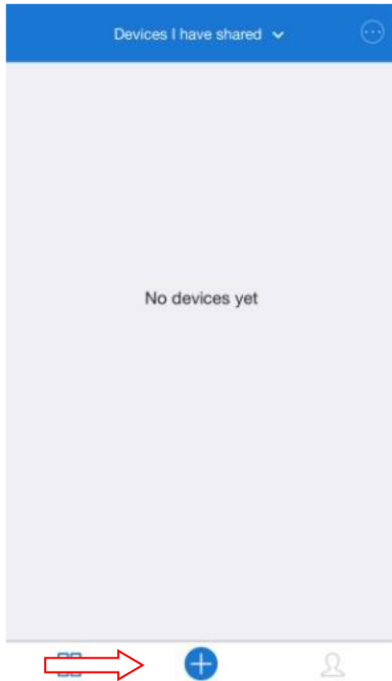
(The Factory Default Program Code is 999999) The Green Light on the keypad will be blinking.



P1

BS-K33 Wifi Mobile APP Set Up Instruction

- In the App, tap on the " + "
- Select Quick pairing

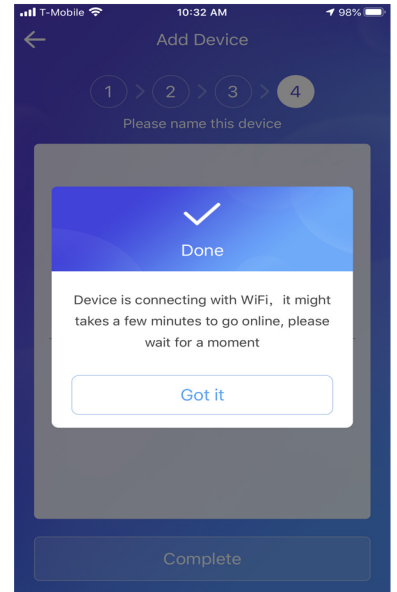
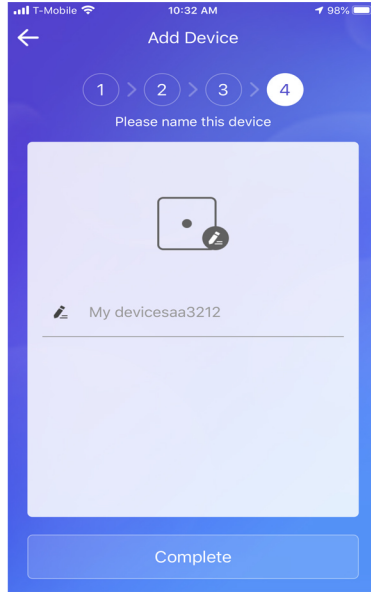


- Select Wifi and type in Wifi password . Click Next
(It is not compatible with 5G)

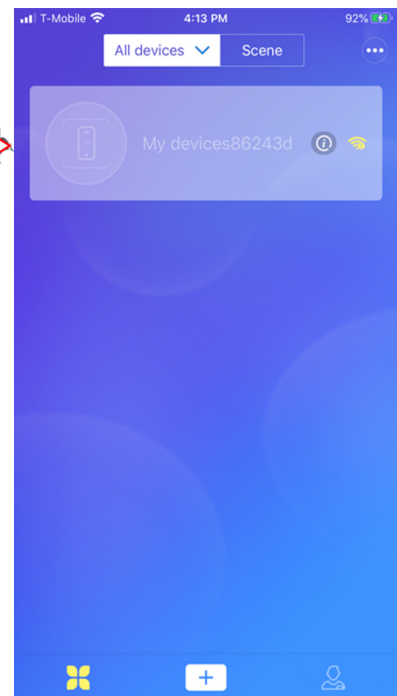


BS-K33 Wifi Mobile APP Set Up Instruction

- It will begin to connecting and will take about 3 minutes.



- Once added you should now be able to see the device on the main screen. Tap it to unlock the door.
- To add an additional device, follow the same steps using your existing account.

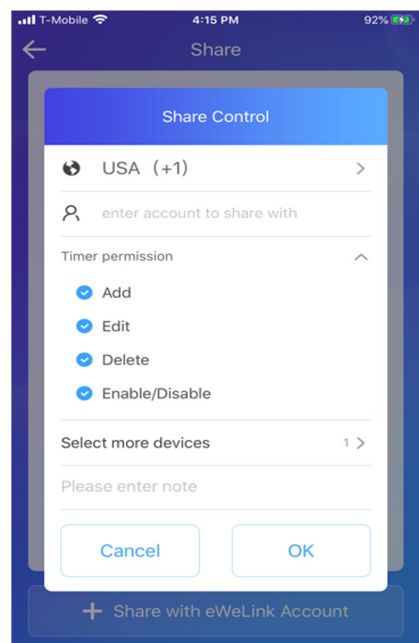
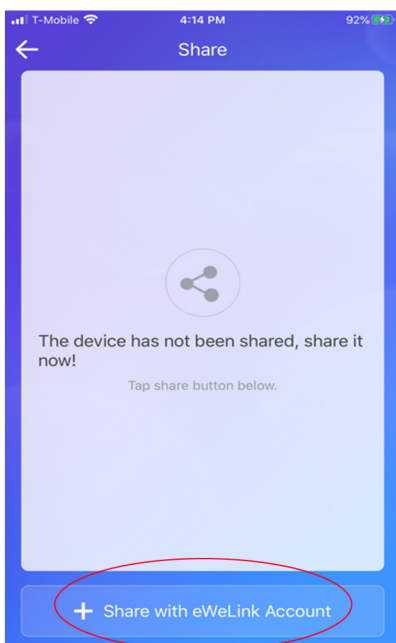
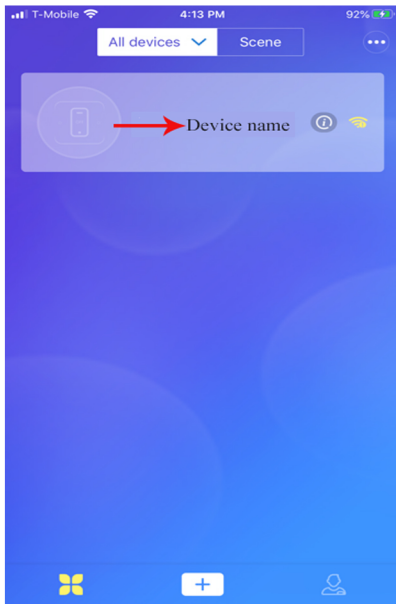


BS-K33 Wifi Mobile APP Set Up Instruction

Sharing the device with another user.

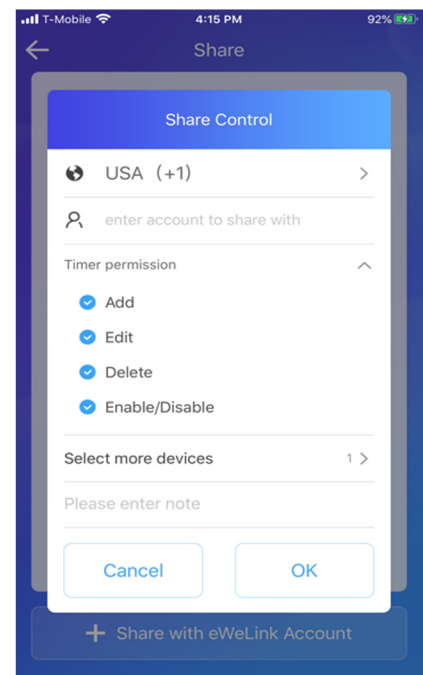
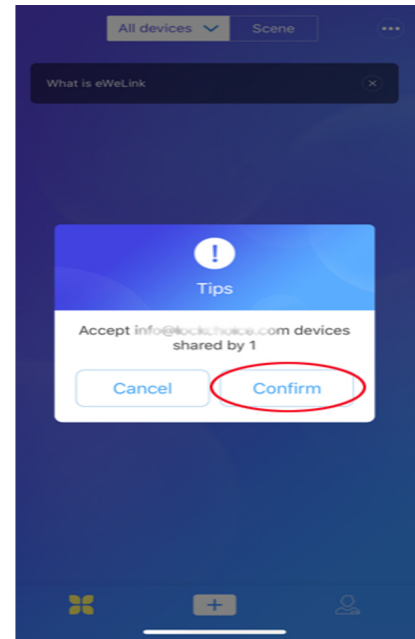
- To share the device, TAP on the **device name**. This will bring you to another display. Next tap on the share button on the bottom left.

The user you will share the device with must create an account to receive a share invite.



BS-K33 Wifi Mobile APP Set Up Instruction

- Type in the users active account and click ok, you will get a message stating the invite was sent successfully.
- The user will receive a message, if they agree they will be able to see the device on their Smart Phone app.
- If the permission is given, they can open the door and use some of the functions of the device such as setting up a timer to unlock/lock.
- Using the Admin account you can set user permissions for users that are added to the shared devices.



BS-K33 Wifi Mobile APP Set Up Instruction

Setting an Unlock/Lock Schedule or timer

- To set up a timer or daily scheduled timer event tap on the device name.
The tap on the timer Icon .



. In the Schedule , Timer and Loop Timer , You can set a one time unlock or weekly Scheduled Lock/Unlock .

