

5.Key Specifications

Input voltage:	100V-240V(50Hz/60Hz)
Power consumption:	Working≤14W, Standby≤2W
Calling ring:	Two sounds of "dingdong"/chord music
Sound transmission system:	Hand free two-way communication
Wire specification:	50 meters
Night vision source:	LEDs
Automatic switch-off delay:	60 s

6.Standard Parts:

- ☒ One Door Station
- ☒ One Monitor
- ☒ Mounting Bracket
- ☒ Screws and Plastic expansion plugs(Green color)
- ☒ User manual
- ☒ Test wire or cable

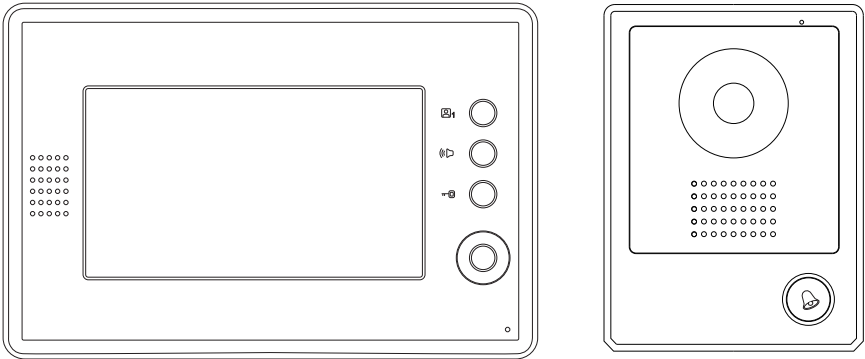
Design change may be
taken without prior notice

VIDEO DOOR PHONE

2 WIRE NON-POLAR

SYSTEM

INSTRUCTION MANUAL



SAFETY INSTRUCTION

WARNING : TO PREVENT FIRE OR ELECTRIC SHOCK
DO NOT EXPOSE THIS APPLIANCE TO RAIN OR MOISTURE



This symbol is intended to alert the user to the presence of uninsulated "dangerous voltage" within the product's enclosure that may be of sufficient magnitude to constitute a risk of electric shock to persons.



This symbol is intended to alert the user to the presence of important operating and maintenance(servicing) instructions in the literature accompanying the appliance.

IMPORTANT SAFETY NOTICE

All operating instructions, maintenance and warnings should be followed. Don't install this unit in a location that is excessively hot, cold, humid or dusty. Slot an opening in the cabinet to provide ventilation to ensure reliable operation of the unit and to prevent from overheating.

Do not attach accessories not recommended by the manufacturer. Turn off the power before cleaning. Do not use liquid or aerosol cleaners. Only use a dry cloth for cleaning the body of the unit.

When using this product, do not overload the power outlets or extension cords as this could cause fire or electric shock.

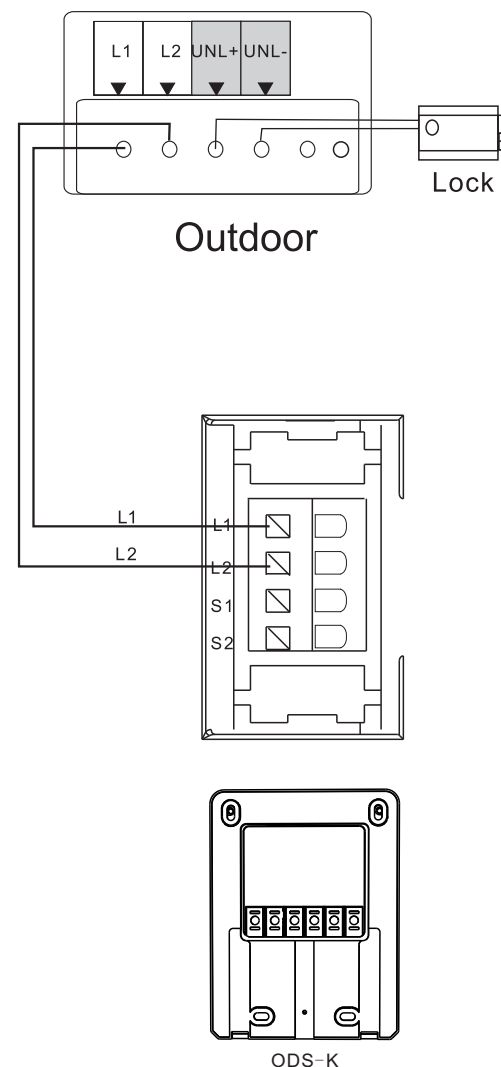
This unit should be operated only using the power source indicated on the label. Do not expose this unit to direct sunlight or rain for reliable operation.

CAUTION!

Connect additional units ONLY specified by the manufacturer. Do not connect it to any other type of alarm or auxiliary device not approved by the manufacturer.

Connecting any unapproved accessories to this unit may damage it or prevent it from operating properly and void the warranty. Do not paint over the camera.

Extended diagram of wire-connection

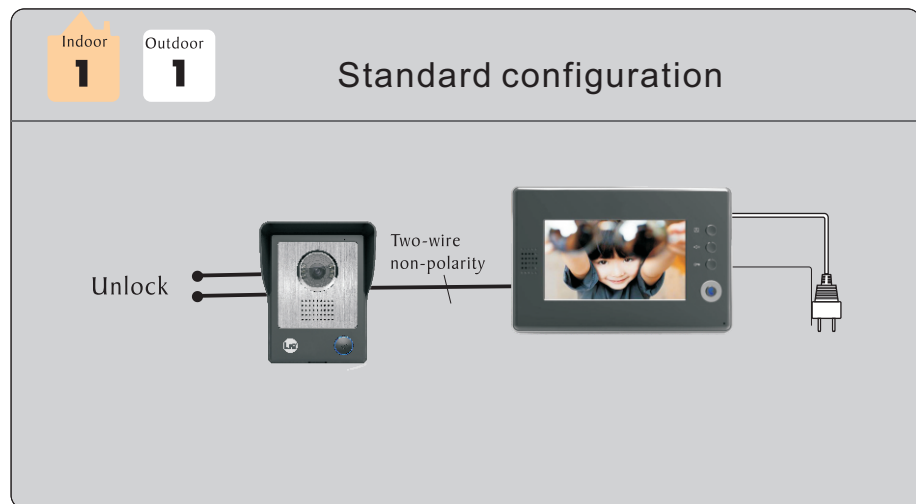


When connect with Extra monitor Please make sure you are using different Port as above ,connection, other wise. The machine could be damaged

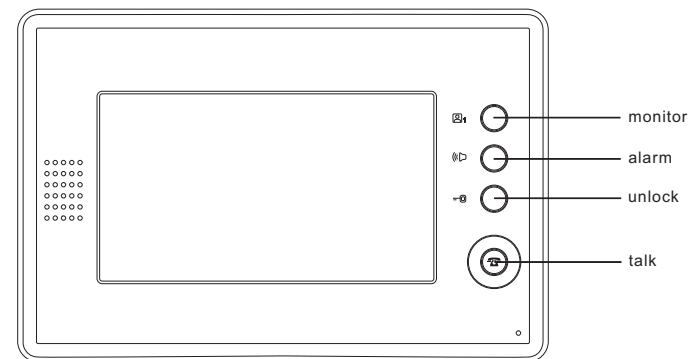
NOTES: The basic system is outlined by the dashed.you can add extra monitor to the system for multimonitor purpose

4.Wiring

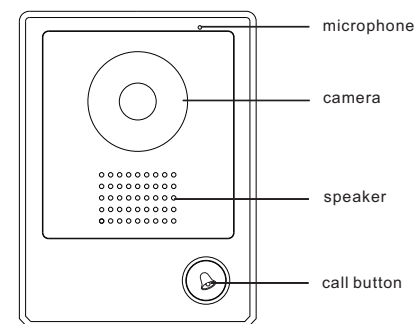
2*0.5mm² PVC insulated soft cable is used in the connection between the indoor monitor and the outdoor station. When the total transmission distance increases to 50 meters, 2*1mm² PVC insulated soft cable must be used. It deploys wire 2*1mm² from door to the lock



Indoor Monitor

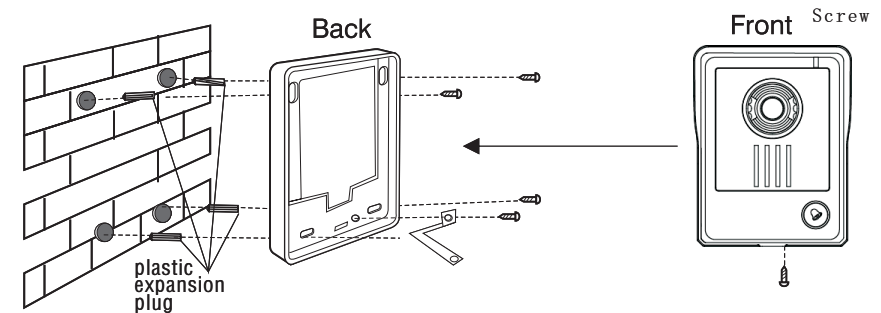


Door Station



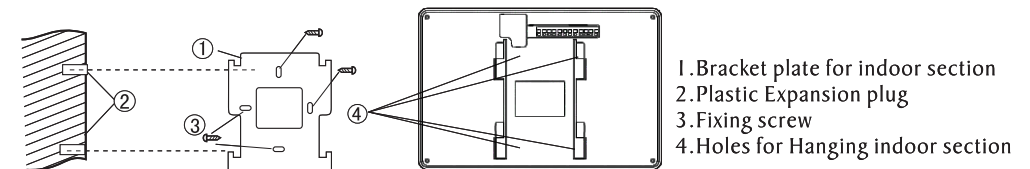
Door station ODS-K

- (1) Frame part Surface-mount the frame part
Make holes for the screw by wall plastic expansion plug and fasten the screws according to the hole of the frame part.
- (2) The recommended height of 150CM helps the camera for proper monitoring range.
First, put the clasp in the frame with four screws, then secure the frame into the wall.
- (3) Connect the wires from the camera unit to the monitor wiring terminal.
- (4) In the end install the outdoor section in the frame as depicted on the figure below.
Tighten up screw from the bottom.



Indoor Monitor

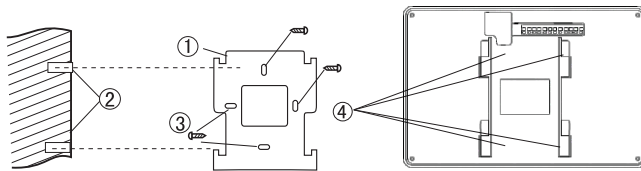
- (1) The indoor section should be fixed properly for convenient operation. To better the monitoring video, the screen should be away from direct strong light..
- (2) Firstly, arrange a through-hole for cables and wires on the wall. Then make several small holes according to the mounting bracket "hole" position. Put the plastic expansion plug into the holes. And next fasten the mounting bracket by driving screws to the plastic expansion plug. After making the wiring, hang the monitor onto the bracket. Please choose a proper height to install Indoor Monitor for convenient operation.



3.Installation

Indoor Monitor

- (1) The indoor section should be fixed properly for convenient operation. To better the monitoring video, the screen should be away from direct strong light..
- (2) Firstly, arrange a through-hole for cables and wires on the wall. Then make several small holes according to the mounting bracket "hole" position. Put the plastic expansion plug into the holes. And next fasten the mounting bracket by driving screws to the plastic expansion plug. After making the wiring, hang the monitor onto the bracket. Please choose a proper height to install Indoor Monitor for convenient operation.

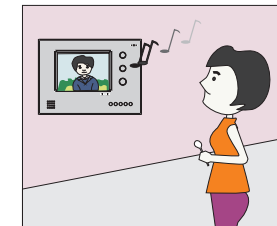
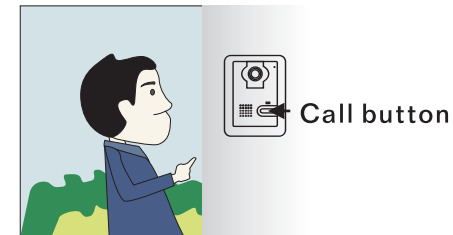


- 1.Bracket plate for indoor section
- 2.Plastic Expansion plug
- 3.Fixing screw
- 4.Holes for Hanging indoor section

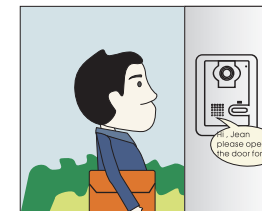
2.Users' Guide and Operation

Door Station

- 1.Visitor comes to press the "call" Button on the door station, a dulcet ring will be heard from the indoor monitor meanwhile the visitor's image will be on the screen.



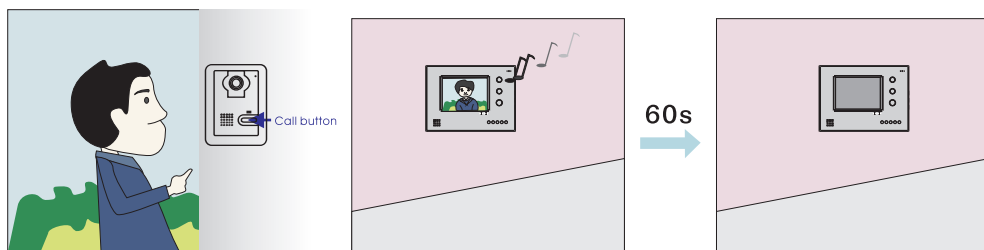
- 2.The inner user can talk with the visitor by pressing the "talk" Button. If pressed the second time, the monitor will be off. The automatic switch-off delay is 60 seconds if nobody answers.



Press the "call" button on the outdoor station



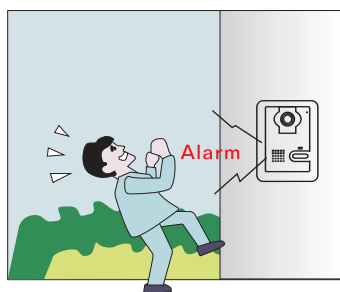
Press the "talk" button and talk with the visitor



Press the “call” button on the outdoor station

If nobody answers after 60s, the monitor will be off automatically

3. After talk, just press the "unlock" Button, the door will be opened. Press the "alarm" button 5 seconds, the outdoor station will sound alarm to scare away the unwelcomed persons.

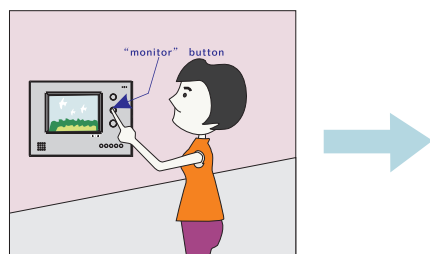


The out door station sounds alarm

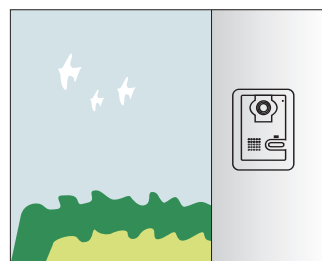


Press the “Alarm” button

4. To see the camera area view, just press the "monitor" Button. The monitor will be off if pressed the second time.



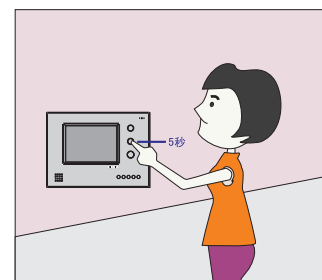
Press the “monitor” button



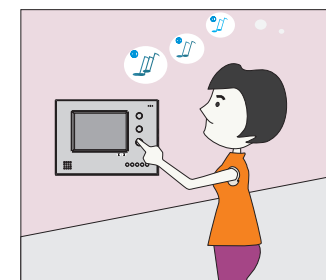
Outdoor status

*For Vdp-C33K Vdp-C32BK, press the button once and the function is "monitor" and the twice is "talking", and monitor is off to standby mode if the third time.

5. For hand-free video door phone, rings can be set: Under standby mode, press the "talk" button about 5 seconds, the system is waiting to set rings, then you can choose the kind of ring you like by pressing the "alarm" button. If pressing the "talk" button for the second time, the system will exit from rings-setting mode.



Press the “talk” button for 5s

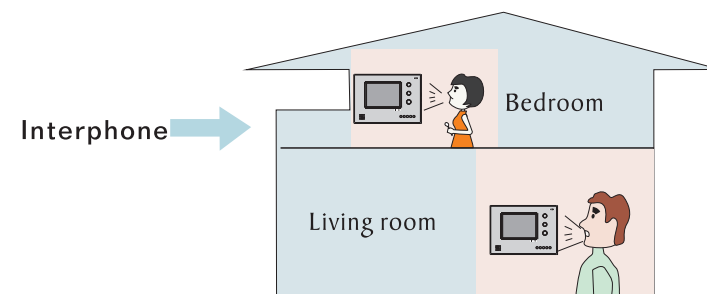


Press the “alarm” button to choose different rings

6. Adjust the brightness/color control wheel button to get good quality images.

7. Adjust the volume wheel button to get appropriate ring volume.

8. In the case of multimonitor, under standby model, the inner interphone between two monitors are available by pressing the "alarm" button.



Door Station

- (1) The visitor presses the call button for calling, a dulcet confirming ring suggests that the system is under working.
- (2) After pressing the talk button, by the microphone, the host can “talk” with the visitor outside
- (3) It helps the system to show clear images at night by the LEDs.

