

## NS-110 Enhanced Alarm Output and Integrated Fire Control Expansion Controller



### Function Introduction:

This enhanced Alarm Output and Integrated Fire Control Expansion Panel only can compat with the NS series controller.

4-way alarm output, you can specify which function to which door of the controled area.

Can connect the fire control output, when fire signal received, doors in the controlled area will be open automatically, and fire alarm will be recorded.

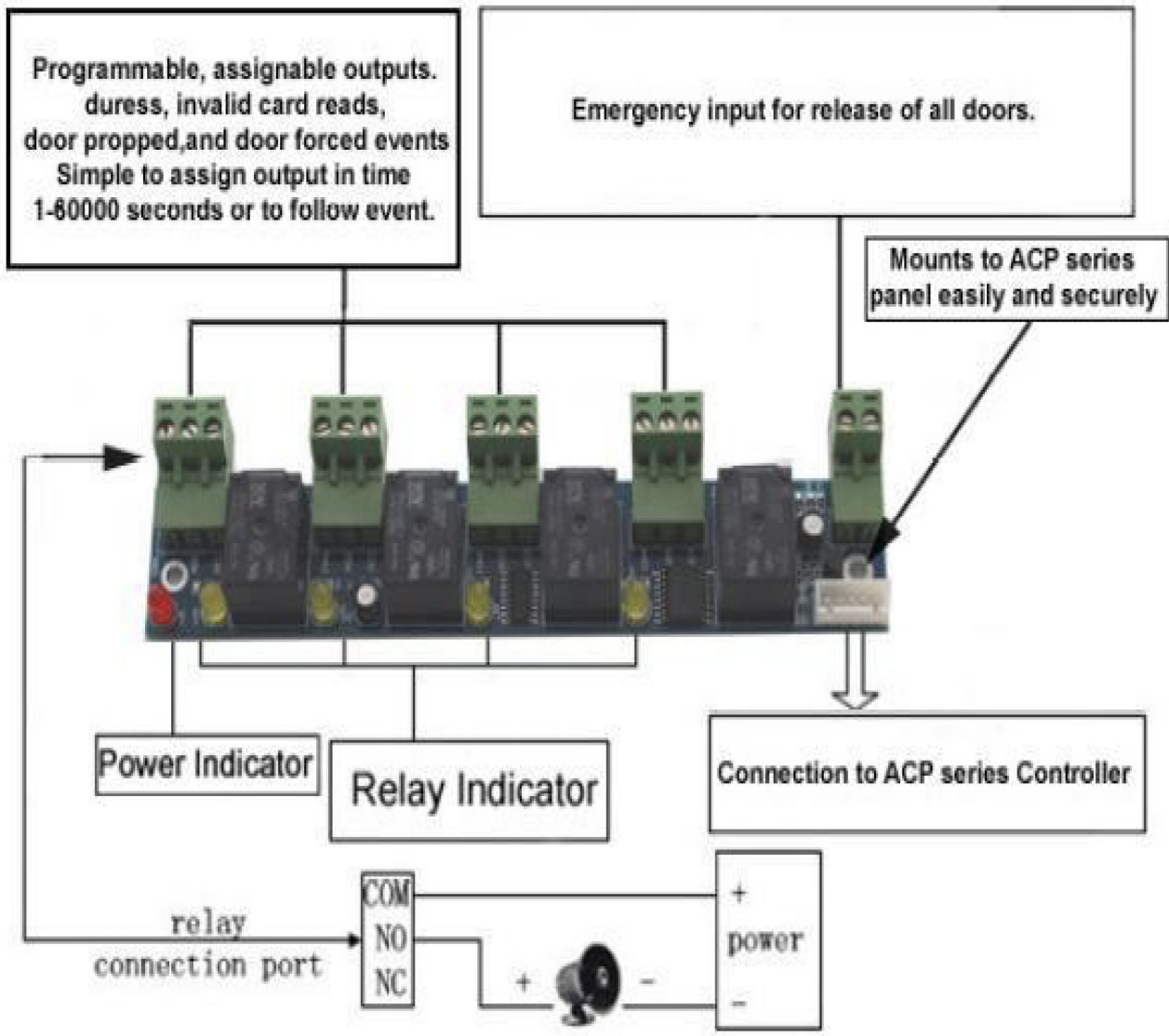
Can control: invalid break in alarm, long time unlocking alarm, intimidation break in alarm, unlocking linkage ouput, invalid card swiping alarm, integrated fire control alarm

Allow to change anti-intimidation password

Can set long time unclocking alarm time: 0-6000 seconds

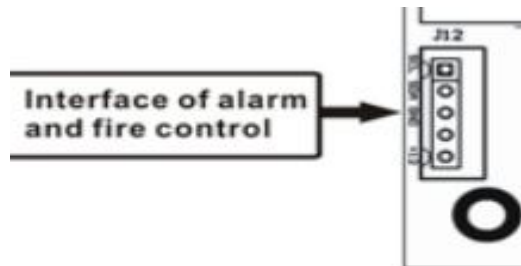
Can set the time delay of each output from 0 to 6000 seconds

Applicable to access controllers: NS-E100 NS-E200 NS-E400



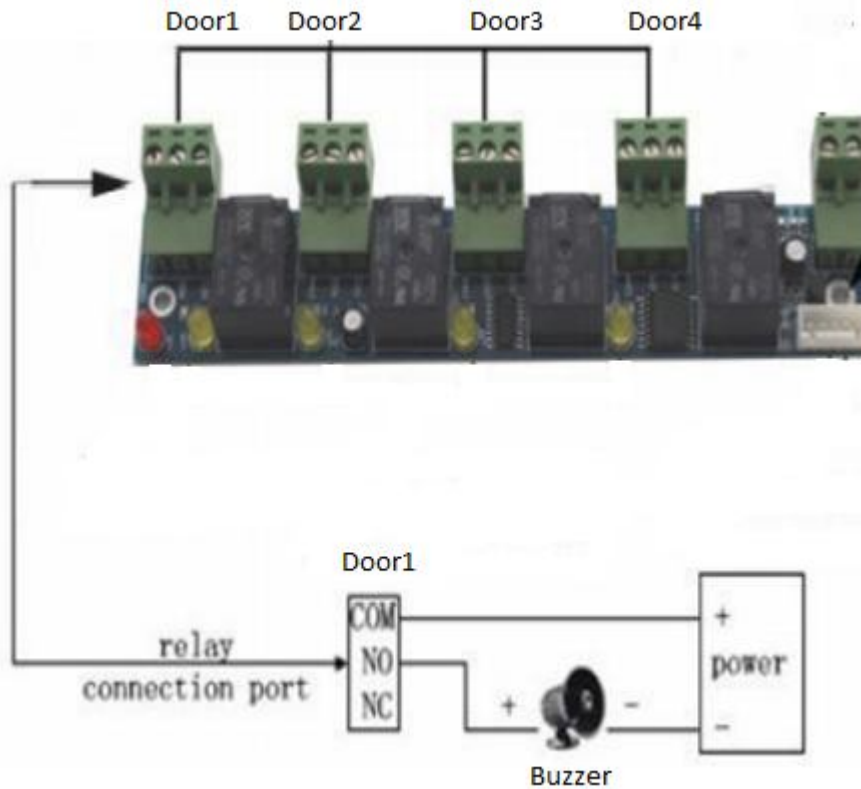
*How to set the alarm when the door is open for a long time?*

1.



Connect the fire alarm bracket to the access control board

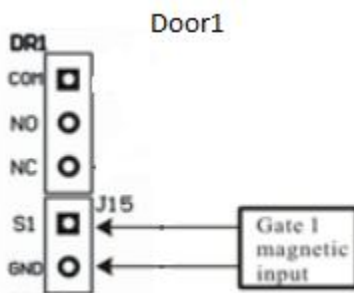
2.



Connect the buzzer (the horn on the diagram) to the Door1 of the fire alarm bracket.

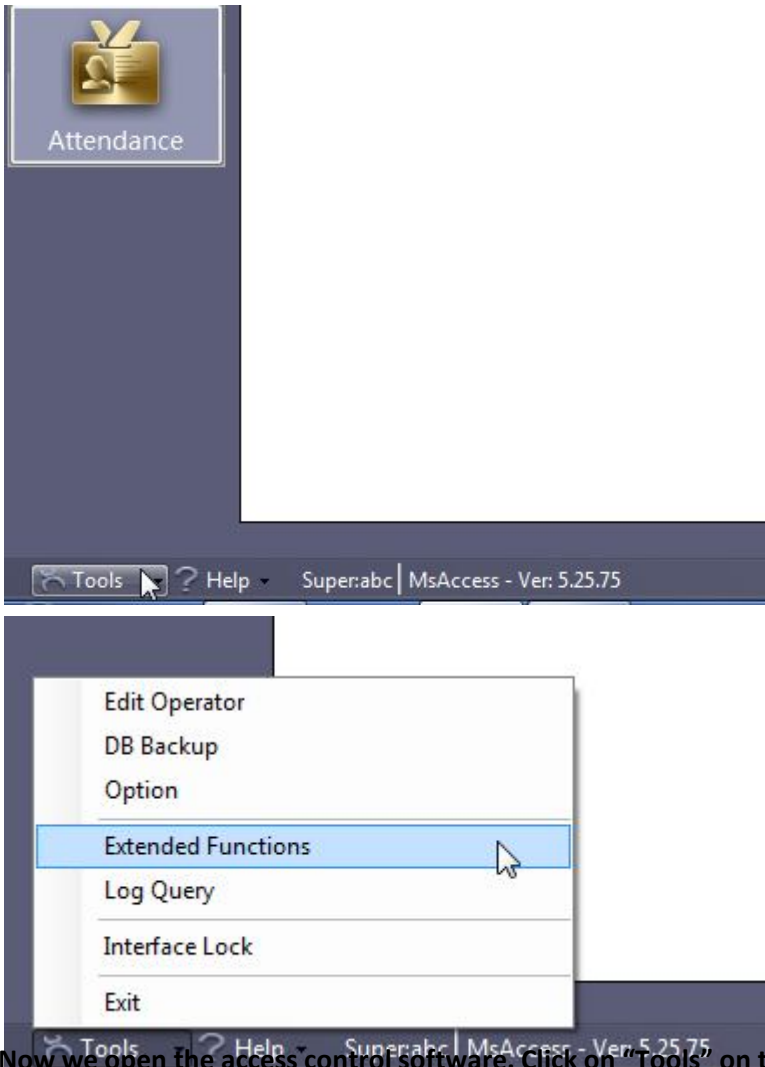
If you want to use the alarm for door2, simply connect the buzzer to Door2 on the diagram, etc.

3.



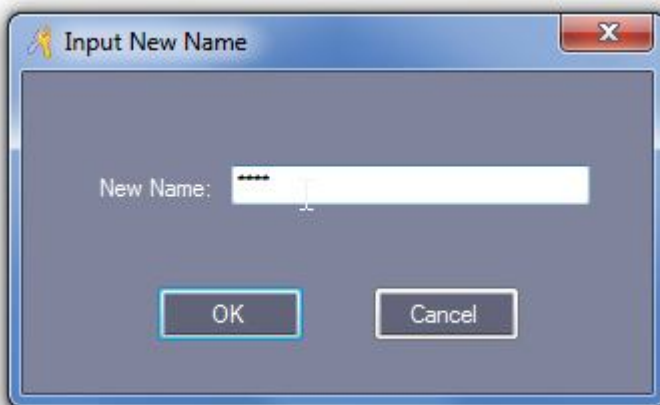
Connect the door sensor to the "S1" and "GND" of the access control board. If you want to use the sensor for door2, simply connect the sensor to "S2" and "GND" of the board, etc.

4.



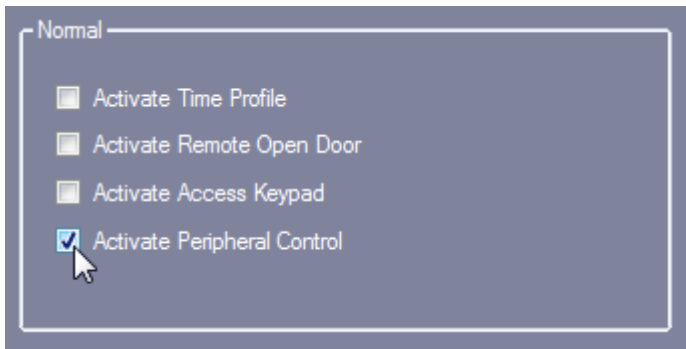
Now we open the access control software. Click on "Tools" on the bottom left of the software. And then click on the "Extended Functions."

5.

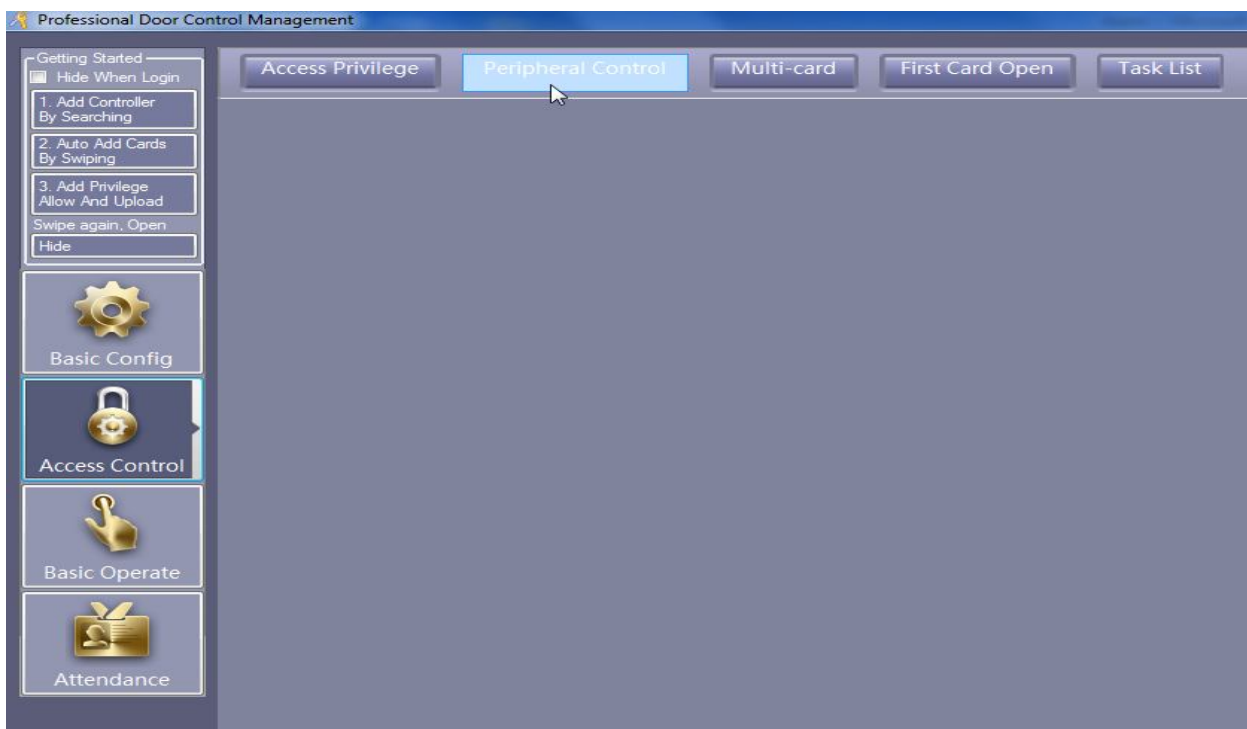


On the new window that pops up, type in the password "5678" to open the extended functions.

6.



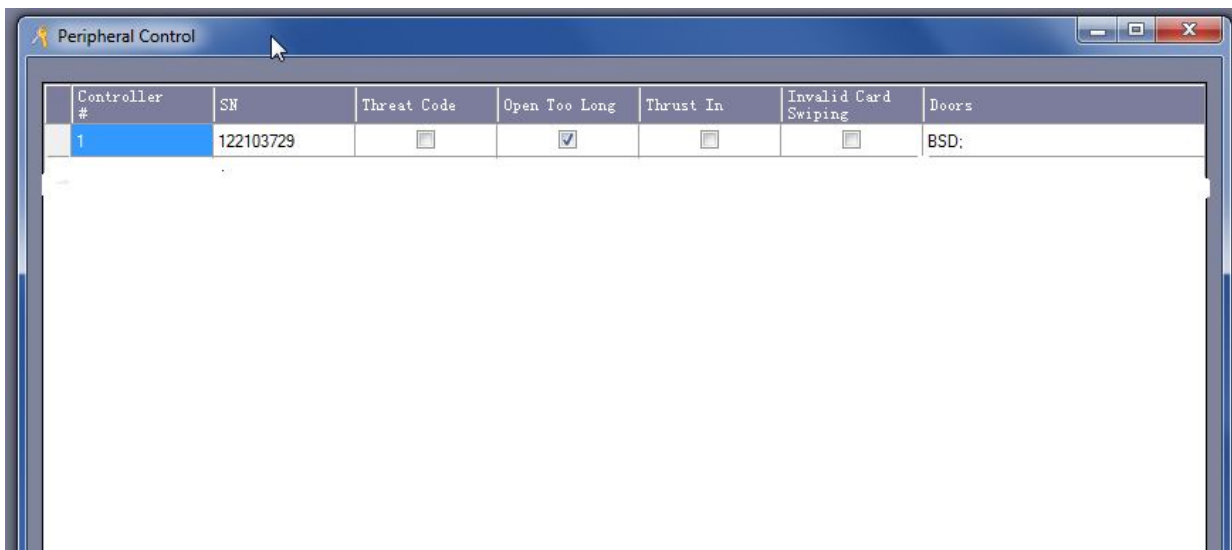
Check the “Activate Peripheral Control” option and click on OK to restart the software.



7.

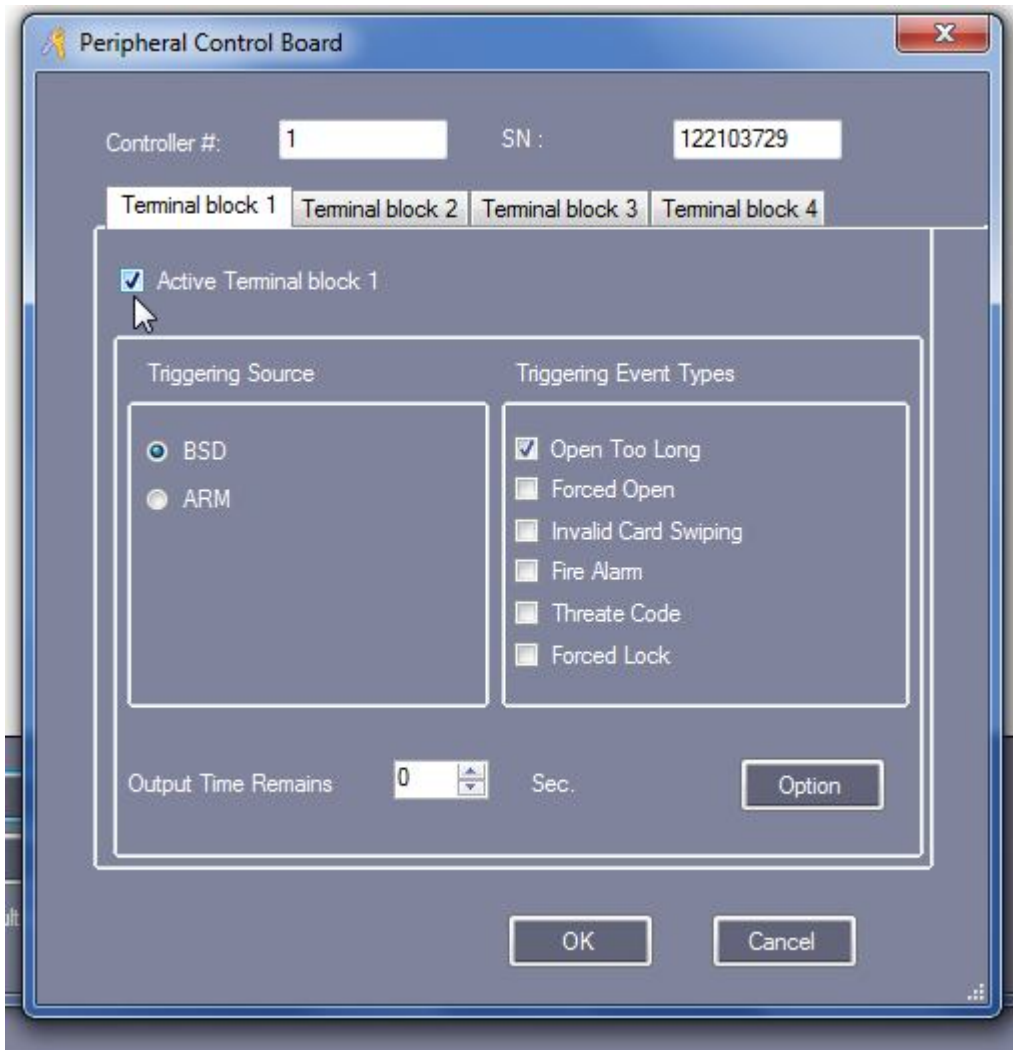
Now click on the “Peripheral Control” from the Access Control Menu.

8.



Check the “Open Too Long,” and change the “Allowable Open Time,” this is the time you allow the door to open without the alarm ringing.

9.

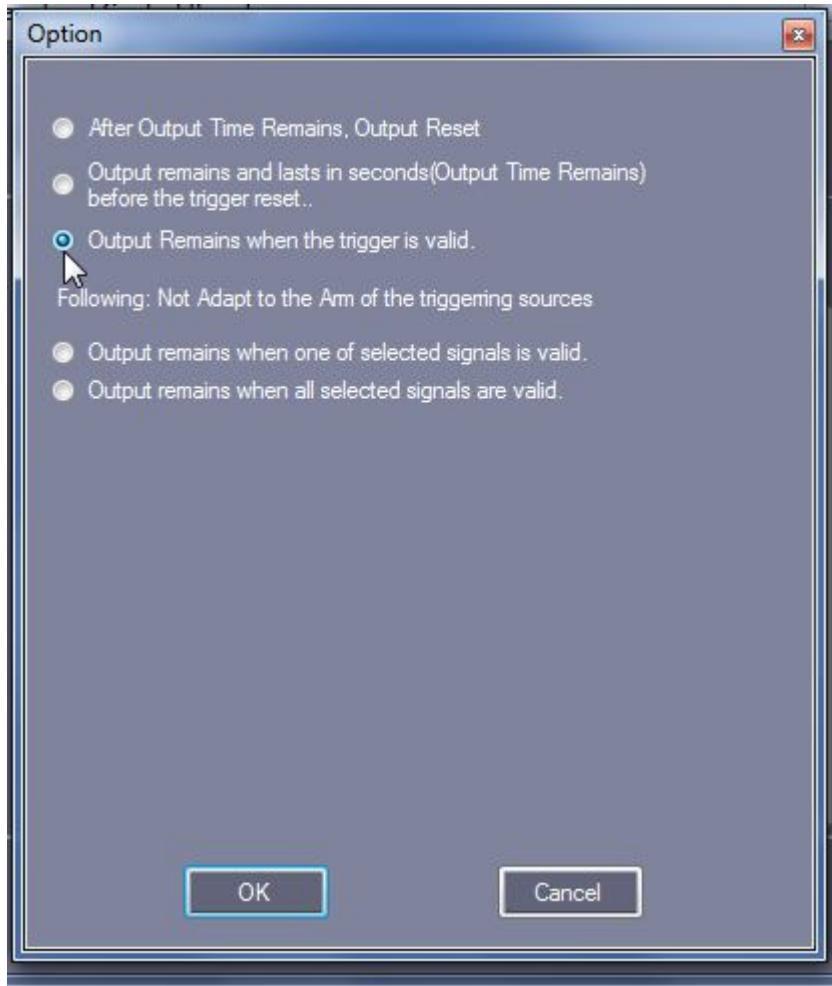


Click on “Hardware Configuration,” and check the “Active Terminal Block 1.”

Also change the “Output Time Remains” to 0.

(If you want to use the alarm system for door2, just activate the Terminal Block 2 and do the same.)

10.



Click on Option and Check the Third one.

11.

Upload your settings to the board and your alarm should start to work the way you set it.