
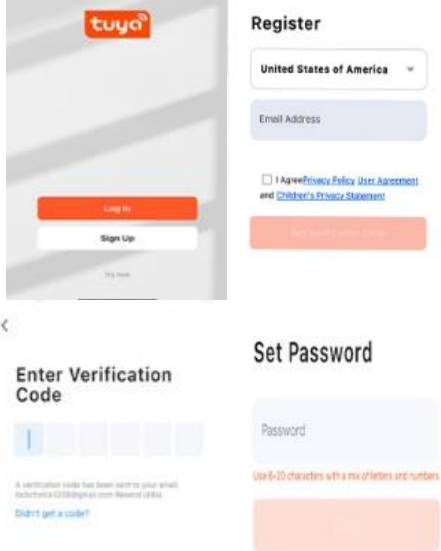
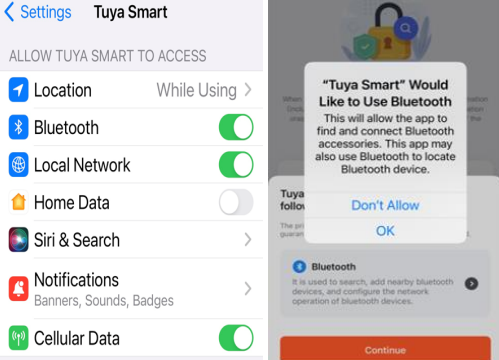


BS-H-3 Access Control APP user manual

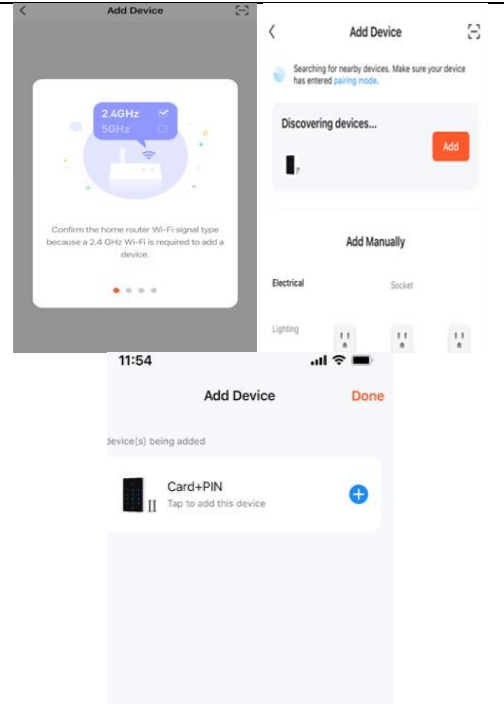
A. Set up APP :

<ol style="list-style-type: none">1. Go to the Apple Store or Google Play to Download “Tuya Smart” APP to your Cell phone .	
<ol style="list-style-type: none">2. Open Tuya APP to Click “Sign Up”.3. Enter your email to click “Get Verification code.”4. Enter Verification code5. Set up Password	
<ol style="list-style-type: none">6. Turn on Tuya Bluetooth , Location and Local Network on phone setting , Then click ok to log in APP .7. Just Touch Keypad to turn on . Click "+" Sign on top right of APP. Then Press “Add Device”	

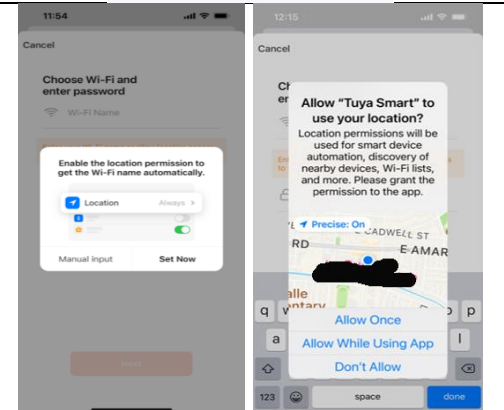
8. It will start to search device . At this time , Click Add when APP discovered device

Note:

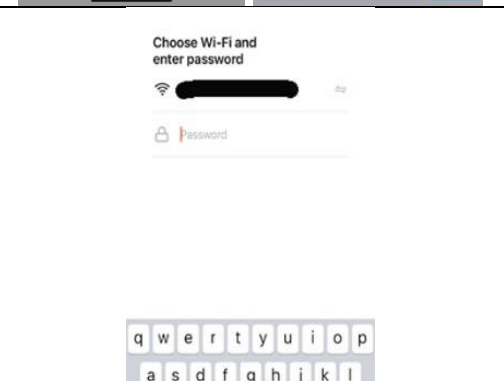
Please bring BS- device within 9 Feet for first time setting up . Click Add .



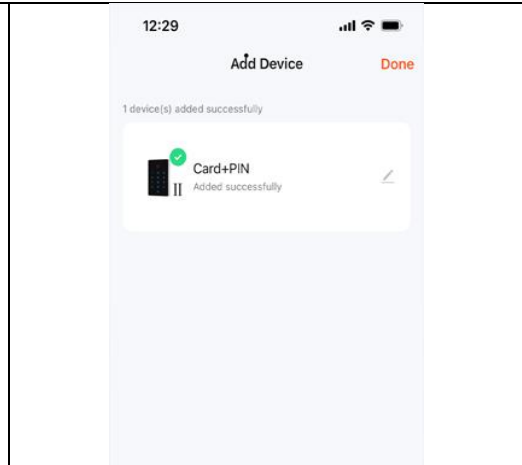
9. Then press “Blue Color + Sign” to set up Wifi connection .



10. Type in your Wifi Router password

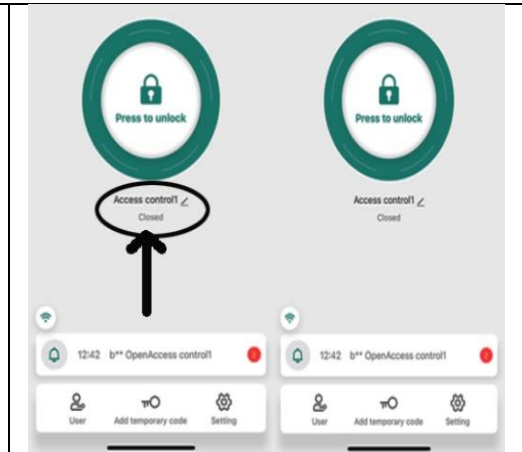


11. After the set up Wifi connection , The device will be added successfully .
12. Press “Done” to finish setting up .



B: User Manual: APP supports 500 Cell phone users and 1000 Pin code or Cards.

1. Add access control name :
Click Access control1 to add or change the name .
2. Unlock:
Press 2 seconds to unlock the door from anywhere .



Note:

If you remove the Administrator from the APP , All Cards and Passcodes are still retained.
 If Administrator is removed , All Member users on the APP will have no access to the device.
 There is only one Administrator on the APP . if the Administrator phone lost , How to remove Administrator account from the APP ?

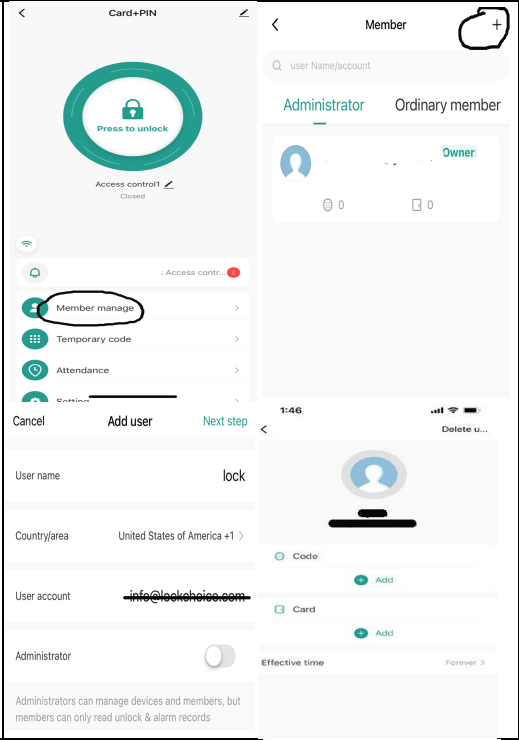
Please use access keypad to press : * (Master Code) # 9 (Master code) # .
 (Default Master Code is 123456)

Then you can add new Administrator on the APP

After Reset factory default , Administrator account from the APP will be removed .

You have to follow this step to add Administrator account to the APP :

* (Master Code) # 9 (Master code) # .

<p>Add User: Click “Member Manage” on the bottom to add user .(User must create a account first from APP) Click + on top right . 3. Type in User Name , Change Country/area to United States Type in User account E-mail . Keep or Change Administrator status . Click Next Step Device Icon will show on User APP . User only can lock or unlock If you add a user as Administrator , This user will have all Administrator authorities. Administrator can add and delete user . Administrator can add 6 digits password or key card for user and issue effective time . Administrator still can track who and when open the door when you click Bell Sign . All users are on the ordinary member list .</p>	
<p>4. Set up Temporary code: Click “Add Temporary code” on the bottom. Administrator can issue cyclicity or once temporary code.</p>	